



Society of Concurrent Product Development Boston Chapter

January 2003

SCP D.....furthering the art and science of rapid product development

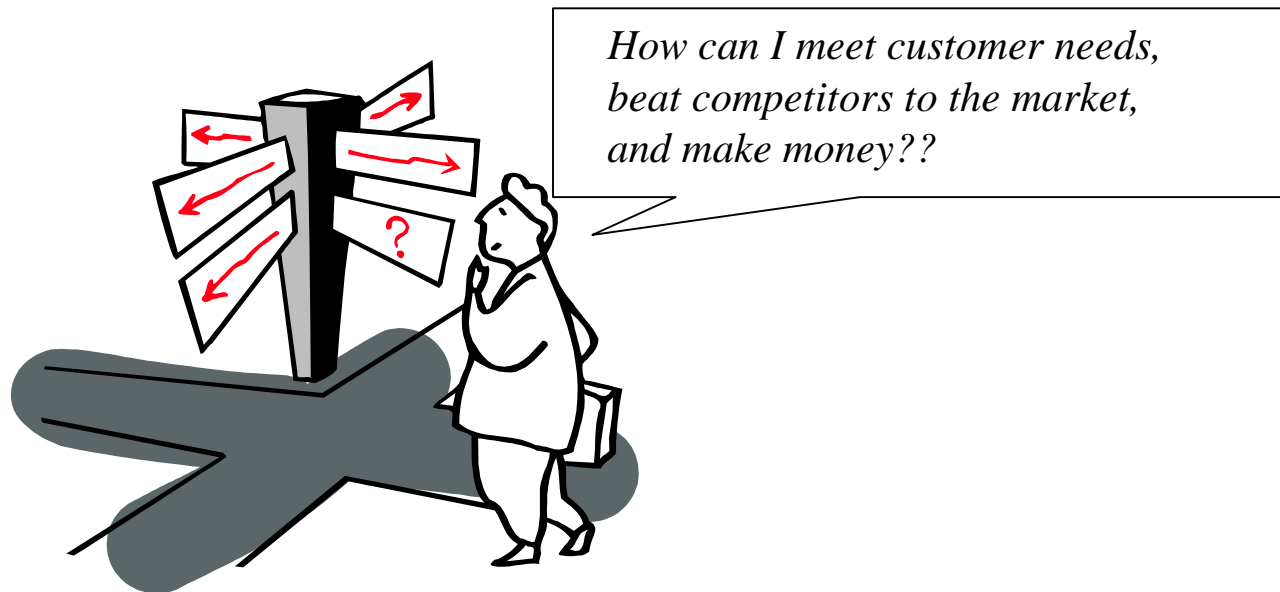
*SCP D Boston Chapter
www.scpdnet.org/boston*

Who is SCPD?

- A society of professionals dedicated to:
 - Providing learning opportunities in CPD best practices
 - Providing access to a network of experienced CPD implementers
- Focused on *concurrent* product development
 - Concurrent NPD process and activities
 - Encompasses all functional areas, the entire company
 - Supported by evolving Body of Knowledge
- 100% volunteer, founded 1992
- Non-profit organization with WW and chapter sponsors
- Virtual WW structure complemented by local chapters

Why Care About CPD?

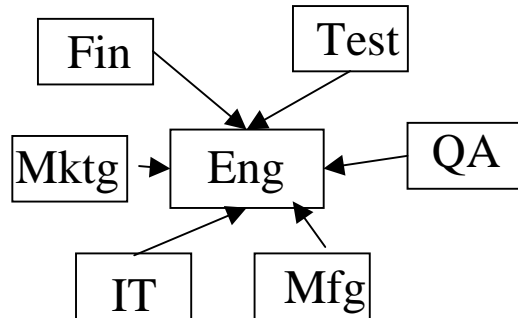
The challenge of “cheaper, faster, better” CAN be met!



Concurrent product development is the only proven way to get all three

NPD: Moving to a Network Model

FUNCTIONAL

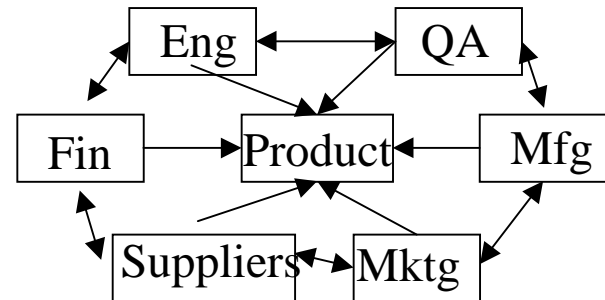


Engineering 'owns' product development

Likely Consequences

- Functional silos
- Functional views
- The 'buck' stops with engineering
- Heavily serial activities
- Late, costly, not meet customer needs

NETWORK



Everyone, working together, owns NPD

Likely Consequences

- Cross functional input sought from start
- Holistic view of product development
- The 'buck' stops with the product team
- Parallel activities
- On time, on budget, customer delighting

Society Vision and Mission

VISION

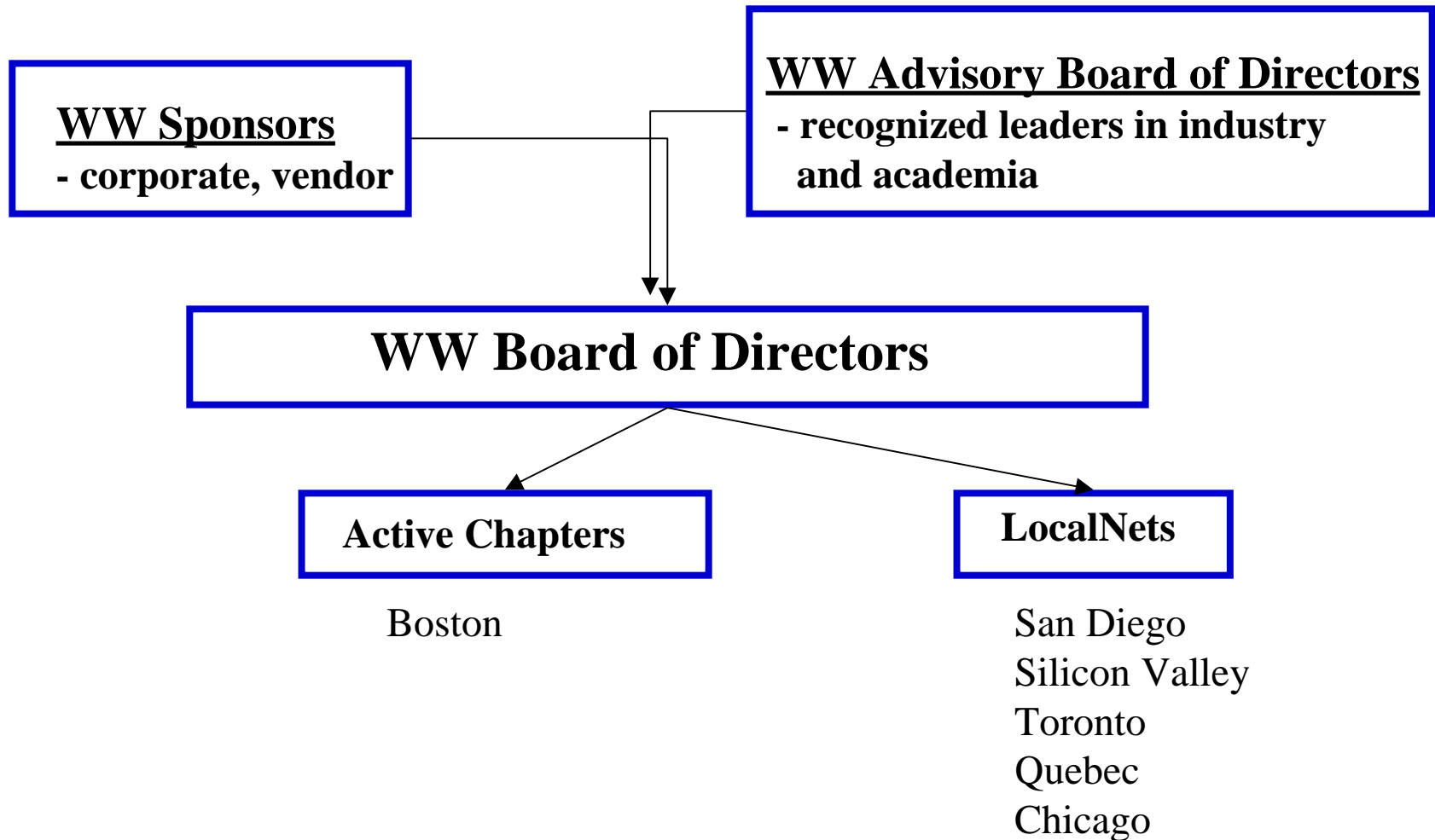
Industry and other professional societies recognize SCPD as the best value and most accessible source for the advancement of CPD practices.

MISSION

To promote the understanding and application of concurrent product development in organizations worldwide.

The Boston chapter focuses its efforts on organizations in Greater New England

Current SCPD Structure



Worldwide Benefits - Today

- Access to best practices (via www.scpdnet.org)
 - Website filled with white papers on CPD practices
 - Quarterly issues of newsletter *Concurrency*
 - Monthly email on emerging ideas and lessons in CPD
 - Access to ‘members only’ online archive of CPD knowledge
 - Access to SCPD’s online bookstore
 - Annual membership directory
- Networking with experienced CPD professionals
 - Annual CPD conference
 - Discounts to conferences offered by SCPD partners



Worldwide Benefits - Tomorrow

- Sharing and developing new CPD best practices
 - Alliances which result in generation of new CPD knowledge, practices and case studies
 - Leading CPD consultants and university researchers
 - Conference providers and professional associations
 - Refereed *Journal of Concurrent Product Development* (online)
 - Focus on industry-specific SIGs
- Access to CPD experts
 - More local chapters and LOCALNets
 - CPD-focused distance education and webinars
 - Certification program



SCPD Boston Chapter Organization

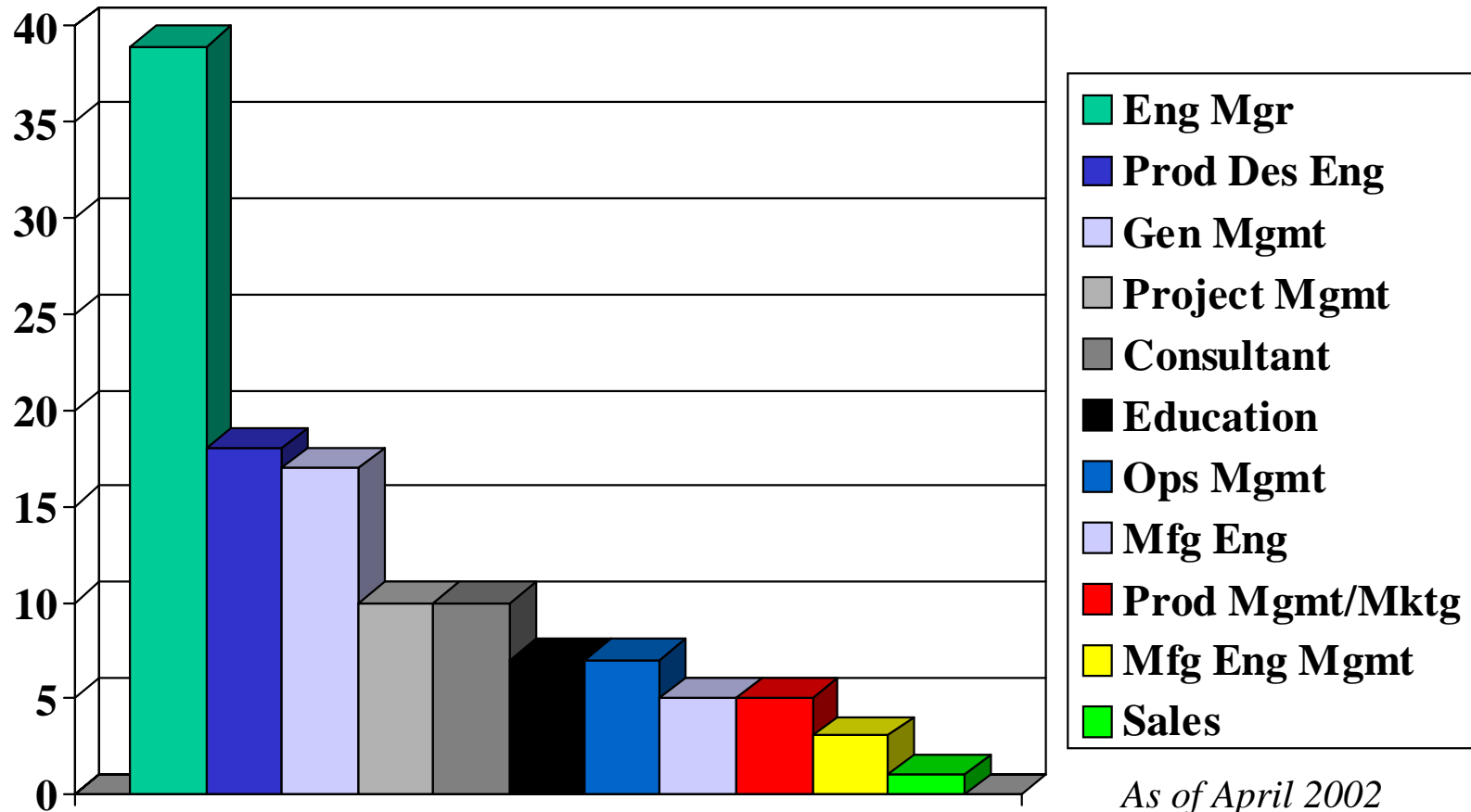


SCPD – Boston Chapter

- Founded in July 1993
- 115 dues-paying members
- Alliances with BASE Council, Mass Bay PMI chapter
- 4 chapter sponsors
 - Bayer
 - Boston University
 - MKS Instruments
 - Motorola



Boston Chapter: Membership by Function

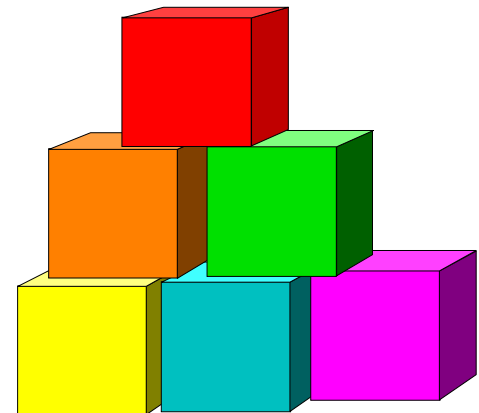


Boston Chapter Benefits - Today

- Sharing CPD best practices
 - 6 Chapter programs a year (member discount available)
 - 2-3 speakers, emphasis on case studies, hands-on experience
 - 7 Chapter newsletters a year
 - Chapter website: www.scpdnet.org/boston
 - Access to members-only portion of website
 - Discounts to local seminars and workshops
- Networking with CPD experts
 - Chapter programs
 - Host site and organizer of the annual WW SCPD conference

Boston Chapter Benefits - Tomorrow

- Spreading CPD knowledge and best practices
 - Continuing Education (CEU) credits for meetings and conference
 - Expanded discounts to local seminars and workshops
- Access to CPD experts
 - “Ask the WW Advisory BOD” program



Boston Chapter Opportunities

- Attend chapter meeting and/or annual conference
- Volunteer to speak
- Become an individual member
 - \$50/year; \$10 discount on all chapter programs for the year
- Become a committee member
 - Many volunteer opportunities to suit your schedule and workload
- Become a chapter sponsor
 - Seat on Boston BOD; general director or committee VP available
 - Drive SCPD Boston forward
 - \$500/year
 - Public recognition (written, electronic and verbal)

Discussion

- How Can SCPD – Boston Help You?
 - Current product development challenges
 - What's just over the horizon
- Opportunity to Give Back
- Share Your Knowledge and Experience

For more information:

Renee Dorjahn

Boston Chapter President

rdorjahn@shore.net

508-482-0056

Back Up Slides

- SCPD BOK (selected items)
- SCPD Boston 2002 – 2003 Programs
- SCPD Boston Board of Directors
- WW SCPD Board of Directors
- WW SCPD Sponsors
- Representative Conference Exhibitors

SCPD Body of Knowledge

*SCPD Body of Knowledge Pillars**

<u>STRATEGY</u>	<u>PEOPLE</u>	<u>PROCESS</u>	<u>TOOLS</u>	<u>TECHNOLOGY</u>
Operational Execution	Resource Allocation	Customer Requirements	Voice of the Customer	Rapid Prototyping
Innovation	Collocation	Modularity	GANTT	Architectures
Partnerships	Recognition	Design Review	Robust Design	Resource Planning
Hurdle Rates	Team Leadership	Collaboration	Target Cost	SW Inspections
Product Selection	Lifelong Learning	Supplier Involvement	Design for Manufacturability	Multi Project Management
Life Cycle Management	Empowerment	Product Definition	Predictive vs. Resultant Metrics	Cycle Time Estimation

**selected items from the BOK*

SCPD – Boston Programs for 2002-2003

- Sept 26, 2002 PROCESS
 - *“Cycle Time: The Long and Short of It”*
- Nov 7, 2002 STRATEGY
 - *“What’s the Next Thing? Get Inbound Marketing”*
- Dec 5, 2002 PEOPLE
 - *“Career Development – How to Foster It”*
- Feb 20, 2003 TOOLS
 - *“Re-engineering Yourself for the Future”*
 - *Joint meeting with Mass Bay PMI*
- April 24, 2003 TECHNOLOGY
 - *“eBusiness: Web Implementation of Products”*



WW SCPD '03 conference June 11-12, 2003

SCPD Boston BOD

PRESIDENT			
Renee Dorjahn	Adaptive Medical Systems	Chapter President	rdorjahn@shore.net
COMMITTEE VICE PRESIDENTS			
Debbie Elsea	Boston University	VP, Publications	delsea@bu.edu
Richard James		VP, Finance	james-rich@attbi.com
Fritz Luft	MKS Instruments	VP, Membership	fritz_luft@mindspring.com
Bob Maigret	ON Semiconductor	VP, Communications	Bob.Maigret@onsemi.com
Jerry Robertson		VP, Programs	waterst@attbi.com
GENERAL DIRECTORS			
Mike Burstein	T.I.P.E.	SCPD '03 Conference Program Director	mcb.tipe@worldnet.att.net
Paul Edelman	Edelman & Associates		paul@edeltech.com
Hans Ludi	Gnothis		hans.ludi@worldnet.att.net
Chuck McVinney	McVinney and Company		chuck@mcvinney.com
Richard Paynting			rjpaynting@yahoo.com
Dick Power	Power Plans	**VP, Chapter Development on WW SCPD BOD	powerpl@gte.net
Marty Ross	Verizon		marty.ross@verizon.com
Keith Shoneman	ValueCreation		kshoneman@earthlink.net
Don Stewart	Concurrency Group		stdone@attbi.com
Bob Whitney	MKS Instruments		Bob_Whitney@mksinst.com
ADVISORY			
Deb Swanson	BASE Council		dswanson@astex.com

WW Board of Directors

PRESIDENT			
Brad Goldense	Goldense Group, Inc.	WW President	blg@goldensegroupinc.com
Dr. Tom Booth	Allied Signal Aerospace	Immediate Past WW President	
COMMITTEE VICE PRESIDENTS			
Laura Clarahan	ACSYS Technologies	VP, Alliances	lclarahan@acsys-tech.com
Alex Cooper	Management Roundtable	Treasurer	alex@roundtable.com
John Cushman	Technology Interface	VP, Publications	jjcush@ix.netcom.com
Peter Fritz	3M	VP, Society Communications	pjfritz@mmm.com
Curtis Hargadine	Development Professionals	VP, Knowledge Management	curtis@developmentprofessionals.com
Chris Hawwer	Sopheon	VP, Marketing	chris.hawwer@sopheon.com
Richard (Dick) Mason	Bayer Diagnostics	VP, Internet	webmaster@soce.org
John R. (Dick) Power	Power Plans	VP, Chapter Development	powerpl@gte.net
GENERAL DIRECTORS			
Michael Bessette	Rogers Corporation		mike.bessette@rogers-corp.com
Bruce Kosa	Rogers Corporation		bruce.kosa@rogers-corp.com
Robert McGill	Solidworks Corporation		rmcgill@solidworks.com
David Meeker	Compaq		david.meeker@compaq.com
Bruce Pittman	Pittman & Company		bpittman@earthlink.net
Don Stewart	Concurrency Group		stdon@attbi.com
Kumar Vaidyanathan, Ph.D.	Federal-Mogul		kvaidyan@fmo.com
CHAPTER PRESIDENT			
Renee Dorjahn	Adaptive Medical Systems, Inc.	Boston Chapter President	rdorjahn@shore.net

WW Advisory Board

- Gerald G. Collela, MKS Instruments
- Steven D. Eppinger, MIT Sloan School of Management
- David R. Holme, John Deere Company
- Winston A. Knight, Boothroyd-Dewhurst and Univ of RI
- Donald G. Reinertsen, Reinertsen and Associates
- Ralph Schmitt, Kysor/Warren
- Donald Sebastian, Stevens Institute of Technology
- Preston G. Smith, New Product Dynamics
- Hugh Vallely, Harley-Davidson
- Jan W.F. Wasley, Simpharma LLC

WW SCPD Sponsors

- Goldense Group, Inc.
- The Gordon Institute of Tufts University
- Product Development Process Consulting
- Rogers Corporation
- SolidWorks
- Sopheon



Conference Exhibitors (Representative Companies)

- Cognition Corporation
- MARC Analysis Research
- Parametric Technology
- Rand Technologies
- Trilogic
- Workgroup Technology Corporation
- Everett Pattern & Manufacturing
- SolidWorks Corporation
- BinTel Systems
- Boston University
- Immersive Design
- Applied Marketing Science
- Ideascope Associates
- Decision Architects
- Division, Inc.
- Project Management Partners
- Agile Software
- Unigraphics Solutions, Inc.